



Accents Woodtones

Exclusively offered *by* C.H.I. Overhead Doors



RAISED PANEL

Shown in dark oak with optional madison inserts and obscure glass.



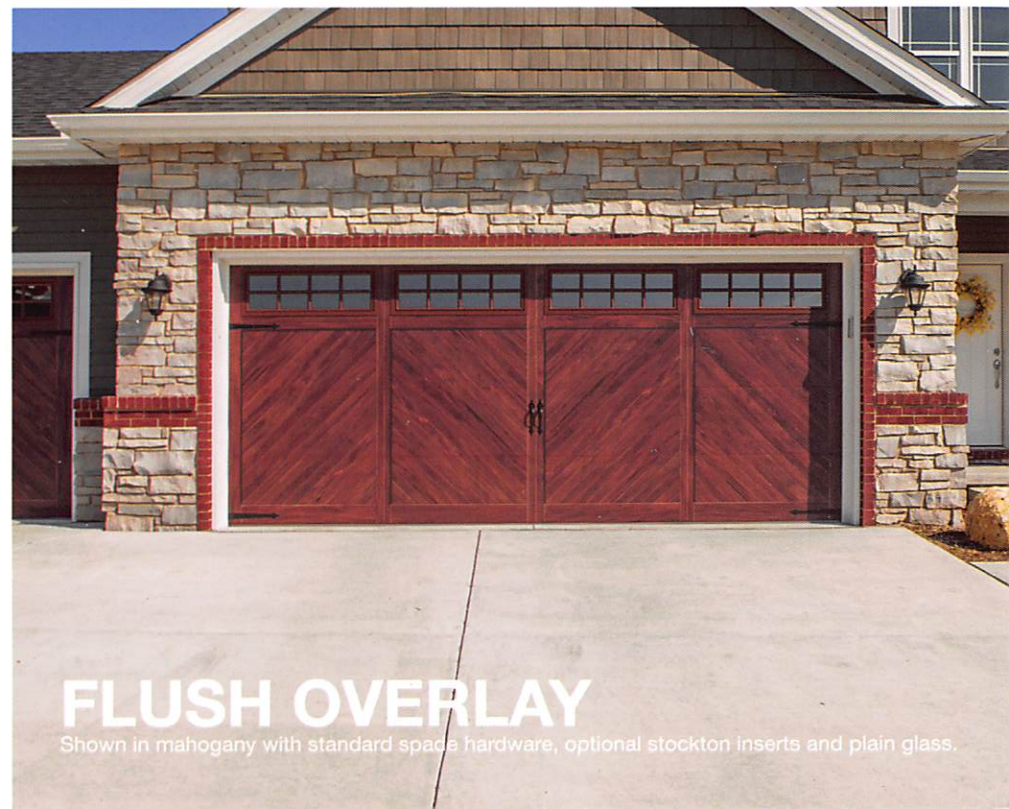
STAMPED CARRIAGE HOUSE

Shown in driftwood with optional madison inserts and standard spade hardware.



PLANKS

Shown in cedar.



FLUSH OVERLAY

Shown in mahogany with standard spade hardware, optional stockton inserts and plain glass.

The finest in woodtone doors.

EXCLUSIVELY OFFERED *by* C.H.I. OVERHEAD DOORS

At C.H.I. Overhead Doors, we believe garage doors should demonstrate both durability and class. Our Accents Woodtones garage doors are meticulously designed and manufactured using full color digital imaging and insulated steel to create the highest quality, most realistic woodtone doors available. Utilizing groundbreaking advances in design and technology, found only at C.H.I. Overhead Doors, each Accents Woodtones garage door is as colorful and authentic as real wood.



Step 1: Hand Select Premium Lumber

We start with carefully selected premium lumber that is milled with precision to uncover each board's unique grain pattern. Only the highest quality boards, chosen for their natural design and texture, become part of our Accents Woodtones family.



Step 2: Digitally Craft Each Door

High-resolution digital scanning captures each detail of the wood and allows our design engineers to digitally construct each door board-by-board. This craftsmanship provides a non-repeating grain pattern that reflects the true color and appeal of real wood.



Step 3: Flawlessly Create Every Section

In order to ensure the classic woodtone appearance for the life of your door, the finished product is treated with an industry leading UV topcoat, providing years of protection from the natural elements.

DURABILITY. WARRANTIED.

All C.H.I. Accents Woodtone doors are made with premium 2" triple layer steel panels, and are backed with the industry's best warranty – 6 years on our hardware and 3 years on our springs⁹. We're proud of our doors, and stand behind them.

APPEARANCE + ENDURANCE PACKAGES

C.H.I. understands the importance of presenting a clean, complete look both inside and out. Add the optional Appearance and Endurance package for powder coated hardware, quiet nylon rollers, and a 25,000 cycle heavy-duty spring to further enhance the look and performance of your Accents Woodtones door.

WINDBREAKER⁷ AND iSERIES⁷ DOORS

Wind can be unpredictable and destructive. C.H.I. Accents Woodtone doors are also available as Windbreaker and iSeries doors, which are designed, tested, and built to the most rugged specifications. These structural enhancements provide additional defense against the elements for your Accents door.

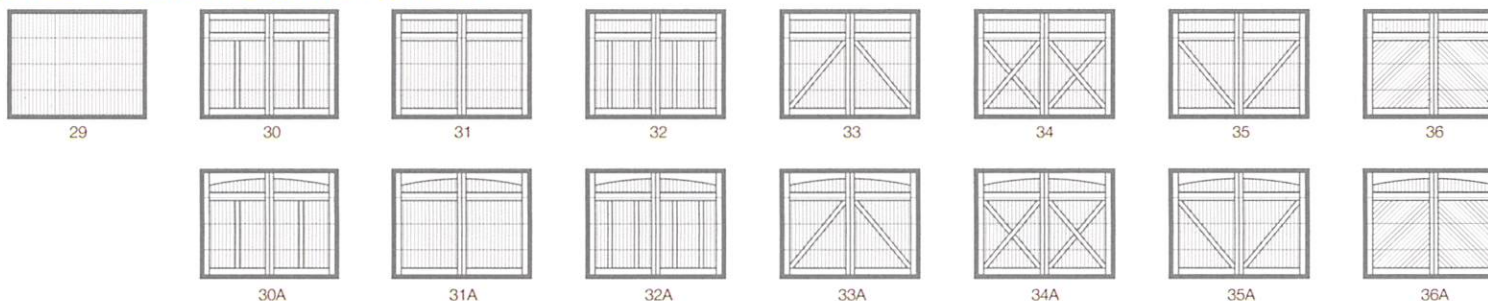


SPECIFICATIONS

Product	2283/4283	2216/4216	5283/5983	5216/5916	3285P	3216P	5217
Style	Raised Panel  Short Panel 2283  Long Panel 4283	Raised Panel  Short Panel 2216  Long Panel 4216	Stamped Carriage House  Short Stamp 5283  Long Stamp 5983	Stamped Carriage House  Short Stamp 5216  Long Stamp 5916	Planks 	Planks 	Flush* 
R-value ¹	 9.65	 17.19	 9.65	 16.55	 10.29	 17.54	 17.54
Insulation	Polystyrene	Polyurethane	Polystyrene	Polyurethane	Polystyrene	Polyurethane	Polyurethane
Options							
Window Inserts	Cathedral, mission, cascade, waterton, sherwood, sunburst, stockton, arched stockton ³ , madison ³ , arched madison ³		Cascade, stockton, arched stockton, madison, arched madison		Cascade, stockton, arched stockton, madison, arched madison		Cascade, stockton, arched stockton, madison, arched madison
Glass ⁴	Plain ⁵ , obscure, tinted, glue chip, frosted		Plain ⁵ , obscure, tinted, glue chip, frosted, seeded		Plain ⁵ , obscure, tinted, glue chip, frosted, seeded		Plain ⁵ , obscure, tinted, glue chip, frosted, seeded
Designer Glass	Hawthorne, somerset, newport, hampton, temple, florence		Newport, hampton, lasalle ⁶ , florence		Newport, hampton, lasalle ⁶ , florence		Newport, hampton, lasalle ⁶ , florence
Accents Woodtones	Cedar, mahogany, dark oak, light oak, driftwood		Cedar, mahogany, dark oak, light oak, driftwood		Cedar, mahogany, dark oak, light oak, driftwood		Cedar, mahogany, dark oak, light oak
External Hardware	None		Spade ⁸ , wrought iron, barcelona 1, barcelona 2		None		Spade ⁸ , wrought iron, barcelona 1, barcelona 2

¹ R-value testing is in accordance with ASTM C518 standards. ² Refer to your local door professional for exact color match. ³ Available in the long panel models only. ⁴ Textured or tinted glass lets in light while obscuring vision and improves the natural beauty of your home. ⁵ Also available as 1/8" polycarbonate. ⁶ Available in 21" sections only. ⁷ Some options may not be available, refer to your local C.H.I. door professional. ⁸ Comes standard. ⁹ For doors up to 8' high.

FLUSH OVERLAY DESIGNS FOR 5217

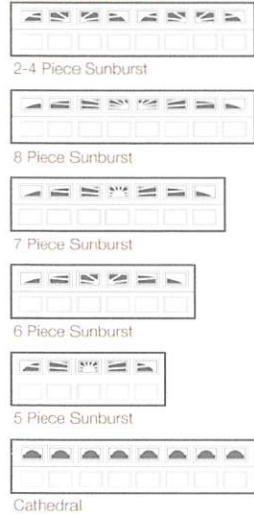


Visit our website

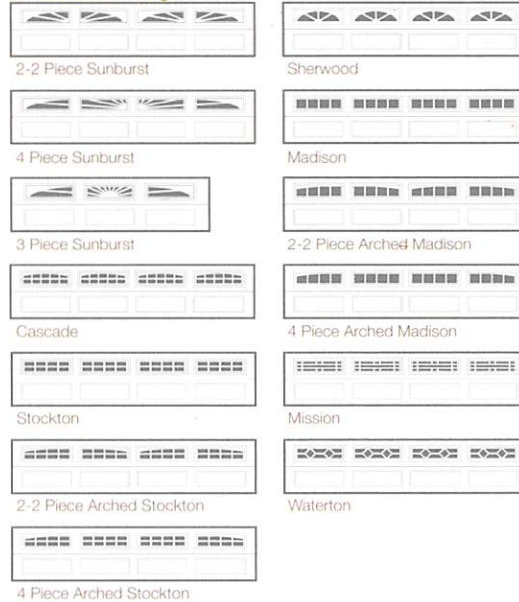
For more information, photos, or videos visit our website, chiod.com/accents.

INSERTS

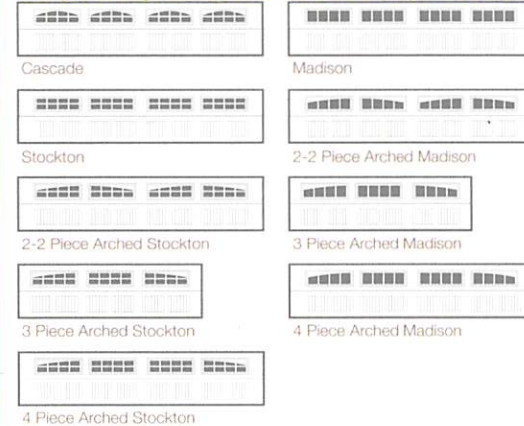
Raised Panel - Short



Raised Panel - Long



Stamped Carriage House, Planks and Flush Overlay Window Inserts



WOODTONES²



GLASS⁴

Short/Long



DESIGNER GLASS

Short



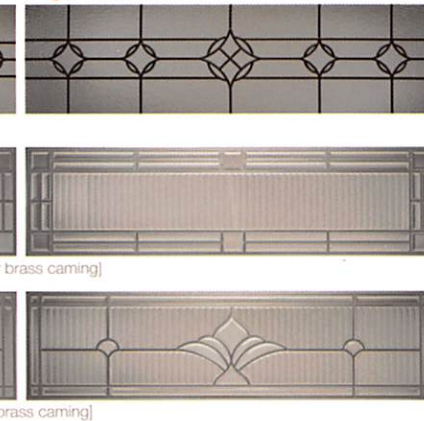
Long



Short



Long



EXTERIOR HARDWARE





BEST WARRANTY IN THE INDUSTRY

C.H.I. has a reputation for manufacturing quality garage doors, it's only fitting that our hassle free warranties outperform all others.



COMMITTED TO GREEN

We have taken numerous steps to make our operations as green as possible by recycling waste products, reducing transportation emissions, and increasing our energy efficiency.

Ask Your Door Professional at:



C.H.I. Overhead Doors | 1485 Sunrise Drive | Arthur, IL 61911 | USA
chiohd.com



C.H.I. Overhead Doors are manufactured in Arthur, Illinois, USA.